

# Auditable locks for controlled drug cabinets



## Auditcon 552 electronic safelock:

- Self-Powered Technology
- Audit trail
- Dual Mode
- 99 user codes
- Supervisor/ Subordinate mode
- FOC PC Software
- Easy Retrofit
- Training & support available on request
- Standards: EN 1300 Class B /VdS Class 2

*The typical image of drug related theft is armed robbers with masks holding up pharmacies for pills to feed their habit. But stealing and even tampering with drugs happens on the other side of the pharmacy counter as well. After many years of supplying mechanical key systems into the controlled drug cabinet industry KABA Ltd were being asked for locking solutions that provided not only physical security, but also advantages associated with electronic locks, such as audit trails and dual mode functions.*

We are now in a position to offer the Auditcon® family of electronic locks which was developed initially to address the security requirements of a broad range of retail, commercial and industrial markets and is now a world-wide market leading safe lock. The lock utilizes the award-winning PowerStar™ technology which is self-powered and requires no batteries or electrical supply, the Auditcon's security cannot be compromised by outside manipulation and provides unprecedented audit capability, making it an effective deterrent to surreptitious theft and tampering of controlled drugs.

In the general guidance notes issued in 2014 by the *Home Office Drugs Licensing and Compliance Unit* it recommends that "licensees are encouraged to consider using a product that has been fitted with a combination lock as this avoids the need to make separate arrangements for the safe storage of a key" and "the locks may require two persons to enter their respective combinations and some provide an audit facility which enables data to be downloaded to a computer for managers to monitor the use of the lock(s). Such audit trails are useful as a starting point for any investigations following a theft/loss."

The knowledge that your input to the lock is being recorded forces the user to ensure that the lock is always re-locked. Cabinets are no longer left unlocked, even if the next user/users are waiting to gain access. This forces a procedure of improved security.

The Auditcon 552 electronic safelock meets all of these requirements and has been successfully used by a major health care provider in the UK over a number of years in a multi user discipline.

**Self-Powered Technology:** Auditcon locks are self-powered by an internal generator creating power when the dial is rotated. These eliminate the need for batteries in the lock or in a key. This technology eliminates lockouts due to dead batteries or facility power failures and are maintenance free.

**Audit Trail:** The user's ID is recorded every time a function is performed on the lock thus deterring internal theft by providing absolute reliability. The number of entries/activities is 400 records in sequential order by real time and date.

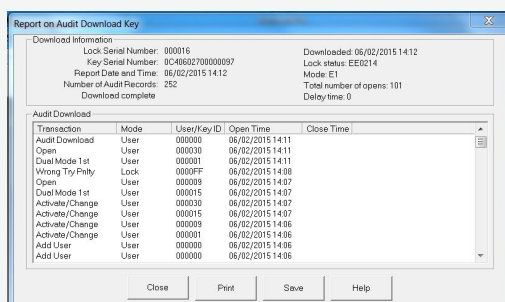
**Dual Mode:** Optionally programmed mode that provides absolute accountability by requiring the entry of two separate user combinations when opening the lock.

**Users:** Up to 99 user/operator codes. The codes have no cost implications as they are numbers with a user's two digit prefix.

**Supervisor/Subordinate Mode:** Allows access by a subordinate only after being enabled by a supervisory combination. Once enabled, a subordinate user has access to the lock during any valid opening time.

**FOC PC Software:** Print, display or file the lock audit reports using a user friendly program which runs under Microsoft Windows® Software.

- Program Lock Setup Options
- Upload Lock Time/Date
- Add/Delete Users
- Upload Time Windows
- Audit Download Reports
- User Table Download Reports



**Easy Retrofit:** The lock can be retrofitted on site to existing cabinets by use of a conversion kit if required. Alternatively they can be specified on new cabinets from leading UK drug cabinet manufacturers.

**Training:** Customer support and training available on request.

**Standards :** EN 1300 Class B / VdS Class 2.